

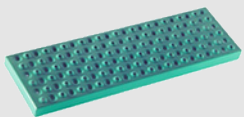
Rolastair™ Folding

Knock-down Base and Handrails

- Knock Down design reduces shipping costs
- Standard 12" deep top platform
- Large 2" dia. non-skid, non-marking shoes
- 1" dia. steel tube construction
- 42" tall guardrails on all models
- OSHA Safety green enamel finish
- Meets CAL/OSHA requirements
- Meets Federal OSHA/ANSI requirements
- 350 lb. capacity

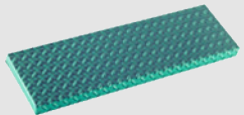
Optional Features

- Extra deep platform in 12" multiples
- Custom handrail arrangement or height
- Special paint colors
- Hot dip galvanized finish



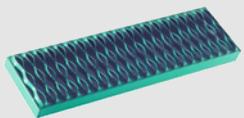
Traction Tread (standard)

Provides greater nonslip protection than diamondplate.



Diamond Plate (optional)

Provides anti-slip protection through use of raised diamond shaped ribs on a fully closed step surface.



Safety Grating (optional)

Provides maximum non-skid protection in wet and/or dry conditions.



MOBILE LADDER STANDS

Ladder Industries



Rolastair™ Folding

Select the best unit for your application
based on the required platform height.
Custom Sizes are Available.

DESCRIPTION	STEPS	MODEL	PLATFORM HEIGHT	TOP WIDTH	OVERALL HEIGHT	BASE DIMENSIONS	EST. WEIGHT
All of these models are shipped fully folded to reduce shipping cost. All are provided with StepJack foot controlled floor lock assembly. 3-1/2" swivel casters are mounted on the StepJack. 3-1/2" rigid casters are used under platform.	6	F20H6 F26H6	57" 57"	20" 26"	99" 99"	26"W x 48 1/2"D 31"W x 48 1/2"D	82 lbs. 92 lbs.
	7	F20H7 F26H7	66-1/2" 66-1/2"	20" 26"	108-1/2" 108-1/2"	26"W x 55 1/2"D 31"W x 55 1/2"D	89 lbs. 108 lbs.
	8	F26H8	76"	26"	118"	30"W x 62"D	122 lbs.
	9	F26H9	85-1/2"	26"	127-1/2"	33"W x 69"D	135 lbs.
	10	F26H10	95"	26"	137"	36"W x 76"D	142 lbs.
All of these models have 5" rigid casters located under the platform.	11	F26H11	104-1/2"	26"	146-1/2"	39"W x 82 1/2"D	151 lbs.
	12	F26H12	114"	26"	156"	42"W x 89"D	181 lbs.
	13	F26H13	123-1/2"	26"	165-1/2"	45"W x 96"D	207 lbs.
	14	F26H14	133"	26"	175"	48"W x 103"D	232 lbs.
	15	F26H15	142-1/2"	26"	184-1/2"	52"W X 110"D	242 lbs.
	16	F26H16	152"	26"	194"	55"W x 117"D	274 lbs.
	17	F26H17	161-1/2"	26"	203-1/2"	58"W x 124"D	292 lbs.
	18	F26H18	171"	26"	213"	61"W x 131"D	312 lbs.
	19	F26H19	180-1/2"	26"	222-1/2"	64"W x 138"D	327 lbs.

MOBILE LADDER STANDS