

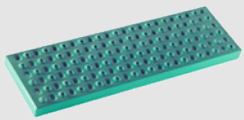
Rolastair™ Standard

Standard Features:

- 1" dia. steel tube construction ruggedly braced and reinforced
- Standard 12" deep top platform
- Solid mig-welded construction
- BIG non-skid, non-marking shoes
- StepJack Floor Locking Device
- OSHA Safety green enamel finish
- 42" tall guardrails on 6-step and larger
- Meets CAL/OSHA requirements
- Meets Federal OSHA/ANSI requirements
- 350 lb. Capacity

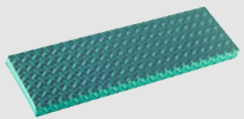
Optional Features:

- Guard chain with snap for entry-exit on any side of platform
- Fold down shelves
- Custom handrail arrangement or height
- Extra deep platform in multiples of 12"
- Special paint colors
- Hot dip galvanized finish



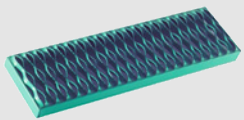
Traction Tread (standard)

Provides greater nonslip protection than diamondplate.



Diamondplate (optional)

Provides anti-slip protection through use of raised diamond shaped ribs on a fully closed step surface.



Safety Grating (optional)

Provides maximum non-skid protection in wet and/or dry conditions.

26H7-TT
Standard
Rolastair



26H4-24TT
Deep Top
Rolastair



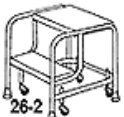

MOBILE LADDER STANDS




Ladder Industries





Rolastair™ Standard

Select the best unit for your application based on the required platform height. Custom Sizes are Available.

| DESCRIPTION | STEPS | MODEL | PLATFORM HEIGHT | TOP WIDTH | OVERALL HEIGHT | BASE DIMENSIONS | WEIGHT |
|---|-------|--------------|--------------------|------------|--------------------|----------------------------|--------------------|
|  <p>No Handrails</p> <p>Attractive and very handy in the office, library vault, stockroom, machine shop, etc.</p>  <p>All models equipped with four each 2" dia. Spring loaded casters and four large, non-skid rubber shoes to grip the floor when in use.</p> | 1 | 20-1 26-1 | 12" 12" | 20" 26" | 12" 12" | 20"W x 16"D 26"W x 16"D | 15 lbs. 20 lbs. |
| | 2 | 20-2 26-2 | 19" 19" | 20" 26" | 19" 19" | 21"W x 21"D 27"W x 21"D | 22 lbs. 28 lbs. |
| | 3 | 20-3 26-3 | 28-1/2" 28-1/2" | 20" 26" | 28-1/2" 28-1/2" | 22"W x 29"D 28"W x 29"D | 31 lbs. 35 lbs. |

| DESCRIPTION | STEPS | MODEL | PLATFORM HEIGHT | TOP WIDTH | OVERALL HEIGHT | BASE DIMENSIONS | WEIGHT |
|--|-------|--------------|--------------------|------------|--------------------|--|--------------------|
|  <p>2 step has 22" tall handrails 3-5 step has 32" tall handrails</p> <p>All models equipped with four each 2" dia. Spring loaded casters and four large, non-skid rubber shoes to grip the floor when in use.</p> <p>Swivel Spring-Loaded</p>   | 2 | 20H2 26H2 | 19" 19" | 20" 26" | 41" 41" | 21"W x 21"D 27"W x 21"D | 32 lbs. 36 lbs. |
| | 3 | 20H3 26H3 | 28-1/2" 28-1/2" | 20" 26" | 60-1/2" 60-1/2" | 22"W x 29"D 28"W x 29"D | 42 lbs. 46 lbs. |
| | 4 | 20H4 26H4 | 38" 38" | 20" 26" | 70" 70" | 24"W x 35"D 30"W x 35"D | 50 lbs. 56 lbs. |
| | 5 | 20H5 26H5 | 47-1/2" 47-1/2" | 20" 26" | 79-1/2" 79-1/2" | 25-1/2"W x 41-1/2"D 31-1/2"W x 41-1/2"D | 57 lbs. 66 lbs. |

| DESCRIPTION | STEPS | MODEL | PLATFORM HEIGHT | TOP WIDTH | OVERALL HEIGHT | BASE DIMENSIONS | WEIGHT |
|---|-------|--------------|--------------------|------------|----------------------|--|---------------------|
|  <p>42" tall guardrail around platform</p> <p>StepJack foot controlled floor lock assembly assures dependable "stop and go" safety on all ladders in this group. All StepJack mechanisms are equipped with two 3-1/2" swivel casters and two fixed casters.</p> <p>6 through 10-step models have two 3-1/2" rigid casters under the platform end.</p> <p>11 through 15-step models are equipped with 5" rigid casters.</p> <p>13 step units and larger are provided with a folded base for ease and economy in shipping.</p> <p>STEPJACK</p>  | 6 | 20H6 26H6 | 57" 57" | 20" 26" | 99" 99" | 27"W x 48-1/2"D 33"W x 48-1/2"D | 81 lbs. 90 lbs. |
| | 7 | 20H7 26H7 | 66-1/2" 66-1/2" | 20" 26" | 108-1/2" 108-1/2" | 28-1/2"W x 55-1/2"D 35"W x 55-1/2"D | 85 lbs. 106 lbs. |
| | 8 | 26H8 | 76" | 26" | 118" | 36"W x 62"D | 116 lbs. |
| | 9 | 26H9 | 85-1/2" | 26" | 127-1/2" | 36"W x 69"D | 126 lbs. |
| | 10 | 26H10 | 95" | 26" | 137" | 36"W x 76"D | 135 lbs. |
| | 11 | 26H11 | 104-1/2" | 26" | 146-1/2" | 39"W x 82-1/2"D | 146 lbs. |
| | 12 | 26H12 | 114" | 26" | 156" | 42"W x 89"D | 158 lbs. |
| | 13 | 26H13 | 123-1/2" | 26" | 165-1/2" | 45"W x 96"D | 190 lbs. |
| | 14 | 26H14 | 133" | 26" | 175" | 48"W x 103"D | 232 lbs. |
| | 15 | 26H15 | 142-1/2" | 26" | 184-1/2" | 52"W x 110"D | 243 lbs. |

MOBILE LADDER STANDS