

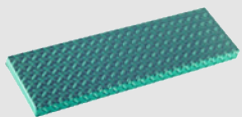
# Rolastair™ Super Duty

## Designed for Extra Heavy-Duty Use

- Rugged 1-1/4" dia. steel tube construction
- Standard 14" deep top platform
- 5" dia. rigid casters under platform
- Stepjack with 3-1/2" dia. swivel casters
- All welded handrails
- Knock-down construction for shipping
- Heavy-duty 2-1/2" "Big Foot" replaceable shoes
- OSHA Safety green enamel finish
- 500 lb. capacity

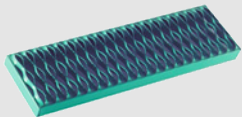
## Optional Features:

- Guard chain with snap for entry-exit on any side of platform
- Fold down shelves
- Narrow aisle models
- Custom handrail arrangement and height
- Extra deep platform in multiples of 12"
- Special paint colors
- Hot dip galvanized finish



### Diamond Plate (standard)

Provides greater nonslip protection than diamondplate.



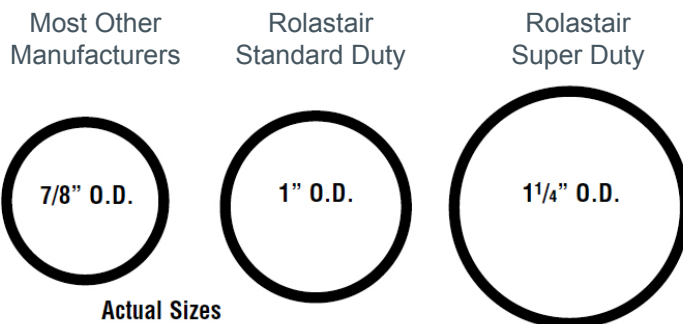
### Safety Grating (optional)

Provides maximum non-skid protection in wet and/or dry conditions.



### Replaceable 2-1/2" dia. "Big Foot" Rubber Shoe Insert

## Compare Steel Tube Frame Construction



### Ladder Industries



# Rolastair™ Super Duty

Select the best unit for your application  
based on the required platform height.  
Custom Sizes are Available.

| STEPS | MODEL    | PLATFORM HEIGHT | TOP WIDTH | OVERALL HEIGHT | BASE DIMENSIONS | EST. WEIGHT |
|-------|----------|-----------------|-----------|----------------|-----------------|-------------|
| 6     | 26H6-SD  | 57"             | 26"       | 99"            | 33"W x 49"D     | 120 lbs.    |
|       | 32H6-SD  | 57"             | 32"       | 99"            | 33"W x 49"D     | 144 lbs.    |
| 7     | 26H7-SD  | 66-1/2"         | 26"       | 108-1/2"       | 33"W x 55"D     | 142 lbs.    |
|       | 32H7-SD  | 66-1/2"         | 32"       | 108-1/2"       | 33"W x 55"D     | 160 lbs.    |
| 8     | 26H8-SD  | 76"             | 26"       | 118"           | 36"W x 62"D     | 154 lbs.    |
|       | 32H8-SD  | 76"             | 32"       | 118"           | 36"W x 62"D     | 176 lbs.    |
| 9     | 26H9-SD  | 85-1/2"         | 26"       | 127-1/2"       | 36"W x 69"D     | 166 lbs.    |
|       | 32H9-SD  | 85-1/2"         | 32"       | 127-1/2"       | 36"W x 69"D     | 192 lbs.    |
| 10    | 26H10-SD | 95"             | 26"       | 137"           | 39"W x 76"D     | 178 lbs.    |
|       | 32H10-SD | 95"             | 32"       | 137"           | 39"W x 76"D     | 208 lbs.    |
| 11    | 26H11-SD | 104-1/2"        | 26"       | 146-1/2"       | 39"W x 83"D     | 190 lbs.    |
|       | 32H11-SD | 104-1/2"        | 32"       | 146-1/2"       | 39"W x 83"D     | 224 lbs.    |
| 12    | 26H12-SD | 114"            | 26"       | 156"           | 42"W x 89"D     | 202 lbs.    |
|       | 32H12-SD | 114"            | 32"       | 156"           | 42"W x 89"D     | 240 lbs.    |
| 13    | 26H13-SD | 123-1/2"        | 26"       | 165-1/2"       | 45"W x 96"D     | 214 lbs.    |
|       | 32H13-SD | 123-1/2"        | 32"       | 165-1/2"       | 45"W x 96"D     | 256 lbs.    |
| 14    | 26H14-SD | 133"            | 26"       | 175"           | 48"W x 103"D    | 226 lbs.    |
|       | 32H14-SD | 133"            | 32"       | 175"           | 48"W x 103"D    | 272 lbs.    |
| 15    | 26H15-SD | 142-1/2"        | 26"       | 184-1/2"       | 51"W x 110"D    | 238 lbs.    |
|       | 32H15-SD | 142-1/2"        | 32"       | 184-1/2"       | 51"W x 110"D    | 288 lbs.    |

MOBILE LADDER STANDS