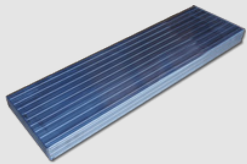


Rolastair™ Aluminum

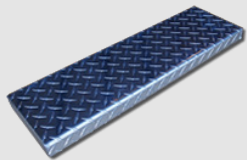
Use When Moisture is a Problem

- All welded 1" dia. high-strength alloy aluminum pipe construction
- Strong, safe 7" wide extrusion forms the steps and top platform
- 2" dia. non-skid/non-marking shoes
- Extra deep platforms available (in multiples of 7")
- Mill finish material
- 300 lb. Capacity
- Custom Designs Available



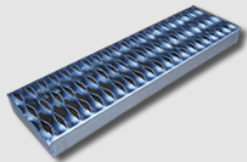
Extruded Plank (standard)

Designed for strength and consistency. Provides the strength of formed aluminum sheet at a lower cost. Top surface is ribbed for traction.



Diamond Plate (optional)

Provides anti-slip protection through use of raised diamond shaped ribs on a fully closed step surface.



Safety Grating (optional)

Provides maximum non-skid protection in wet and/or dry conditions.



MOBILE LADDER STANDS

Ladder Industries



Rolastair™ Aluminum

Select the best unit for your application
based on the required platform height.
Custom Sizes are Available.

DESCRIPTION	STEPS	MODEL	PLATFORM HEIGHT	TOP WIDTH	OVERALL HEIGHT	BASE DIMENSIONS	EST. WEIGHT
No Handrails. Equipped with four 2" Dia. Spring loaded casters.	1	AL20-1 AL26-1	12" 12"	20" 26"	12" 12"	20"W x 18"D 26"W x 18"D	8 lbs. 9 lbs.
	2	AL20-2 AL26-2	19" 19"	20" 26"	19" 19"	20"W x 23"D 26"W x 23"D	13 lbs. 14 lbs.
	3	AL20-3 AL26-3	28-1/2" 28-1/2"	20" 26"	28-1/2" 28-1/2"	22"W x 31"D 28"W x 31"D	19 lbs. 21 lbs.
2 Step Units- 22" Tall Handrails	2	AL26H2	19"	26"	41"	27"W x 23"D	16 lbs.
3-5 Step Units - 32" Tall Handrails & Guardrails	3	AL26H3	28-1/2"	26"	60-1/2"	28"W x 31"D	23 lbs.
Equipped with Four 2" Dia. Spring Loaded Casters.	4	AL26H4	38"	26"	70"	30"W x 37"D	28 lbs.
	5	AL26H5	47-1/2"	26"	79-1/2"	31-1/2"W x 43-1/2"D	36 lbs.
6-9 Step Units - 42" Tall Guardrail	6	AL26H6	57"	26"	99"	33"W x 51"D	45 lbs.
Equipped with Two 2" Dia. Spring Loaded Casters and Two 3-1/2" Rigid Casters Under the Platform.	7	AL26H7	66-1/2"	26"	108-1/2"	35"W X 57"D	54 lbs.
	8	AL26H8	76"	26"	118"	36"W x 64"D	60 lbs.
	9	AL26H9	85-1/2"	26"	127-1/2"	36"W x 71"D	68 lbs.
10 Step and Larger Units - 42" Tall Guardrails	10	AL26H10	95"	26"	137"	36"W x 78"D	77 lbs.
Two 2" dia. spring loaded casters and two 5" Rigid Casters Under the Platform.	11	AL26H11	104-1/2"	26"	146-1/2"	39"W x 86"D	84 lbs.
	12	AL26H12	114"	26"	156"	42"W x 93"D	92 lbs.

MOBILE LADDER STANDS